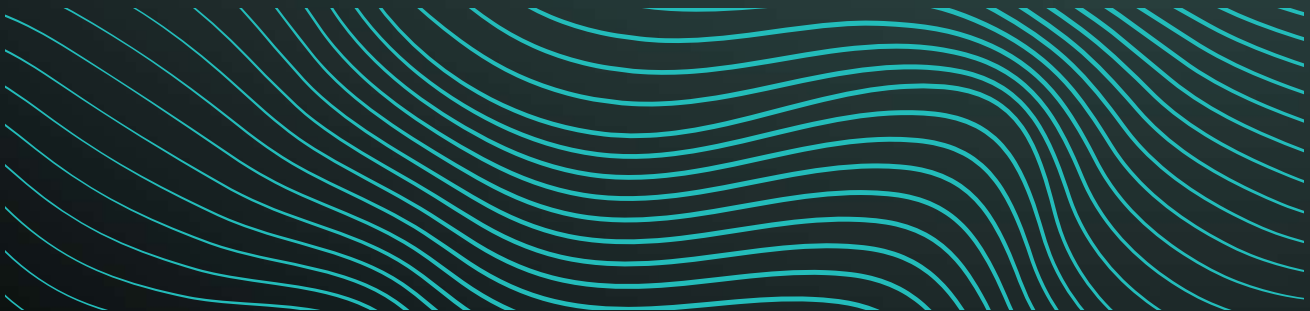
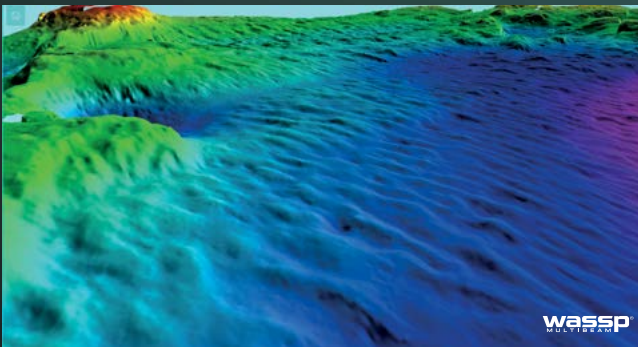


S SERIES

MULTIBEAM FOR SURVEY & MAPPING

# MAP IT ALL



**S SERIES**

**wassp**<sup>®</sup>  
MULTIBEAM

SEE IT ALL



# DISCOVER A NEW WORLD WITH THE LATEST INNOVATION FROM WASSP

---

Outstanding performance, versatility and value. That's what you expect and exactly what you get with the new **S3** sonar from WASSP.

This next generation multibeam sonar has been redesigned from the ground up around a new fully digital DRX transceiver. It delivers on every front – accurate, versatile, user-friendly and most importantly, scalable to your exact needs.

The only thing that hasn't changed with the **S3** is our commitment to bring you a multibeam sonar at a cost-effective price.

**wassp**<sup>®</sup>  
MULTIBEAM

SEE IT ALL

# S3

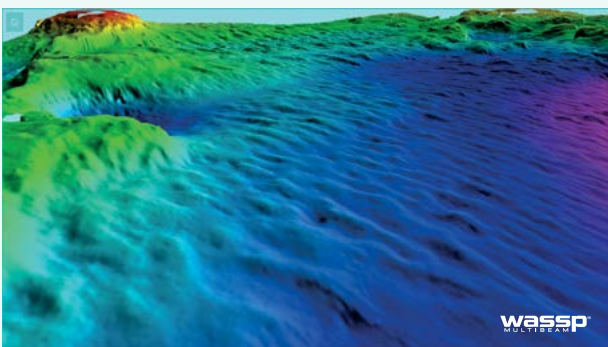
## MULTIBEAM SONAR

- ▶ **New all-in-one digital DRX transceiver.**  
Incredibly versatile and ready for the next technology advances
- ▶ **Wideband fully digital** (136 - 184kHz) transducer technology
- ▶ **Choose your own functions** with new licensing options
- ▶ **Cost-effective solution** for multiple applications
- ▶ **Wireless capability** with optional licence
- ▶ **Easy to install/commission**
- ▶ **Turnkey solution offered** with position/heading and motion sensors
- ▶ **CDX** – simplified user interface
- ▶ **TimeZero compatible** with optional licence



Multibeam Transducer

## TAKING PERFORMANCE AND PRICE INTO UNCHARTED WATERS



The **S3** is the first release of our new DRX family. It's purpose-built for survey and mapping and has been designed with the entry level market in mind: budget, operational needs, and future technology roll-out.

Scanning a 120 degrees swath port to starboard and using 224 beams, the **S3** delivers each and every time. By using advanced signal processing, you get a complete picture of seafloor bathymetry with ease.

The **S3** is one of the world's most cost-effective professional survey and mapping multibeam sonar solutions.

# DRX MULTIBEAM HARDWARE FOR THE FUTURE

This innovative low power, all-in-one “black-box” is not just a robust hardware platform but also introduces **cutting-edge technical innovations and incredible versatility for entry level survey**. This opens countless new possibilities for your operations.

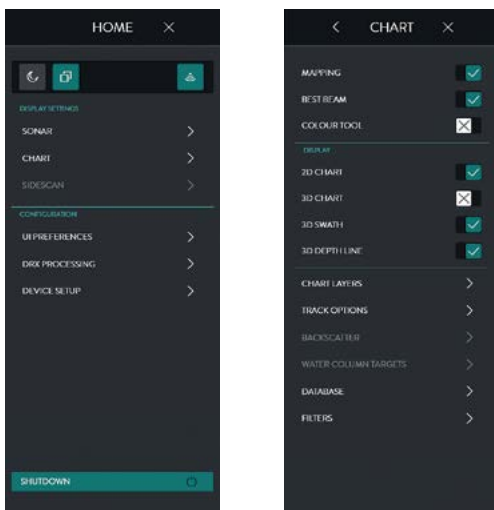


DRX

- ▶ Dimensions (L x W x H): 377 x 260 x 132mm
- ▶ Power supply: 9-32VDC

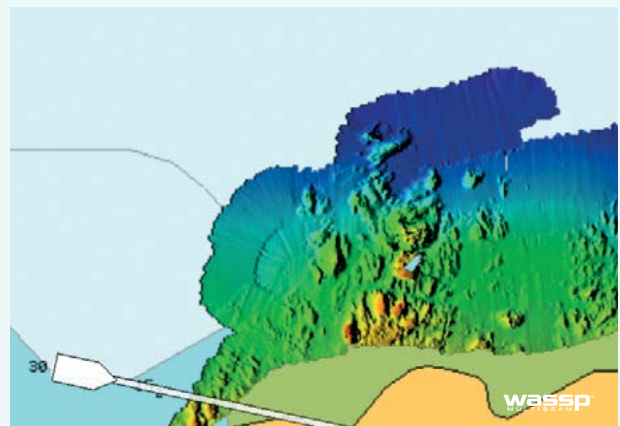
## NEW EASY-TO-USE INTERFACE

The **S3** introduces a new simplified WASSP CDX for control, visualisation and data management while still providing a comprehensive set of functions to meet the most demanding survey or mapping work. This makes the **S3** an ideal choice for jobs where you need an all-in-one system for entry level survey and mapping.



## CAPTURE MORE WITH IMPROVED PERFORMANCE

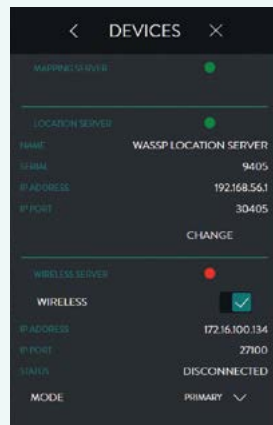
The **S3** is now more sensitive with a higher dynamic range and lower noise level. Through pulse compression and advanced signal processing, the **S3** can deliver accurate, high quality data in even the most demanding marine environments.



## CHOOSE YOUR OWN FUNCTIONS

The **S3** introduces an online licensing system which you can tailor to your specific requirements. You can choose which functions you want today and add new ones as you need them. For example:

- ▶ **WASSP Wireless**
- ▶ **3rd Party Interface**
- ▶ **Side Scan**
- ▶ **Backscatter**



## MORE FLEXIBILITY AND GREATER COMPATIBILITY

In creating the **S3**, we listened to you and redesigned everything around your survey and mapping needs.

You can choose to use the new enhanced WASSP CDX for all your requirements or export data to your current engineering suite such as HYPACK, EIVA or QINSy.



## NEW OPPORTUNITIES FOR SURVEY AND MAPPING

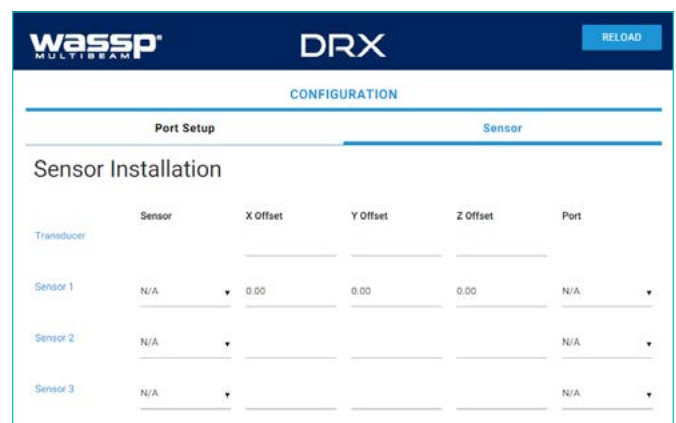
For over a decade, WASSP has delivered professional-level multibeam sonars at a price that bridges the gap between single-beam and more expensive MBES systems.

The **S3** continues that tradition. Its performance and versatility opens new opportunities for anyone who thought that a professional MBES must be beyond their budget.

Port surveying, dredging, coastal, estuary mapping and wreck hunting all fall easily within the **S3's** capabilities.

## FAST AND SIMPLE CONFIGURATION

The **S3** uses a new simple web browser interface to configure the system. You don't need to use software to install it, making installation faster and easier than ever before.



S3

## SPECIFICATIONS

## EQUIPMENT DETAILS

MODEL	S3	S3L
<b>FREQUENCY</b>	160kHz (WideBand Variable)	80kHz (WideBand Variable)
<b>TRANSCIVER TYPE</b>	DRX	DRX
<b>TRANSDUCERS SUPPORTED</b>	WMB-160	WMB-80
<b>IMU SUPPORTED</b>	External	External
<b>DEPTH - SWATH *</b>	200m	450m
<b>DEPTH - MAX *</b>	400m	900m
<b>EFFECTIVE BEAMWIDTH (ATHWARTSHIPS X FORE-AFT)</b>	120° x 4°	120° x 4°
<b>BEAM WIDTH PS (DEG)</b>	4.4	4.4
<b>BEAM WIDTH FA (DEG)</b>	3.2	3.2
<b>BEAM SPACING (NOMINAL)</b>	0.54° over 120° (224 Beams)	0.54° over 120° (224 Beams)
<b>MAX VERTICAL RESOLUTION (CM)</b>	2	2
<b>SENSORS CONNECTIVITY</b>	DRX	DRX
<b>PSU</b>	9-32VDC (30W)	9-32VDC (30W)
<b>BOTTOM DETECTIONS</b>	Amplitude & Phase	Amplitude & Phase
<b>INTERFACE</b>	RS232/422/NMEA0183	RS232/422/NMEA0183
<b>TIDE CORRECTION</b>	Fully Geo Referenced	Fully Geo Referenced
<b>BATHYMETRY 2D / 3D</b>	Yes	Yes
<b>SONAR POLAR VIEW</b>	Yes	Yes
<b>SOUNDER (QUINT BEAM)</b>	No	No

## OPTIONAL MODULES

<b>BACKSCATTER</b>	Option	Option
<b>SIDESCAN</b>	Option	Option
<b>RAW DATA</b>	Option	Option
<b>WATER COLUMN TARGETS</b>	Option	Option
<b>OPEN CLIENT SUPPORT**</b>	Option	Option
<b>RTK TIDES</b>	Option	Option
<b>XYZ DATA FORMAT EXPORT</b>	Option	Option
<b>GSF DATA FORMAT EXPORT</b>	Option	Option

## USER INTERFACE

<b>CDX-VISUALISATION &amp; CONTROL UI</b>	Inc
<b>NMEA 2000</b>	Inc
<b>TIME ZERO PRO**</b>	Option


 WASSP<sup>®</sup>  
MULTIBEAM

SEE IT ALL

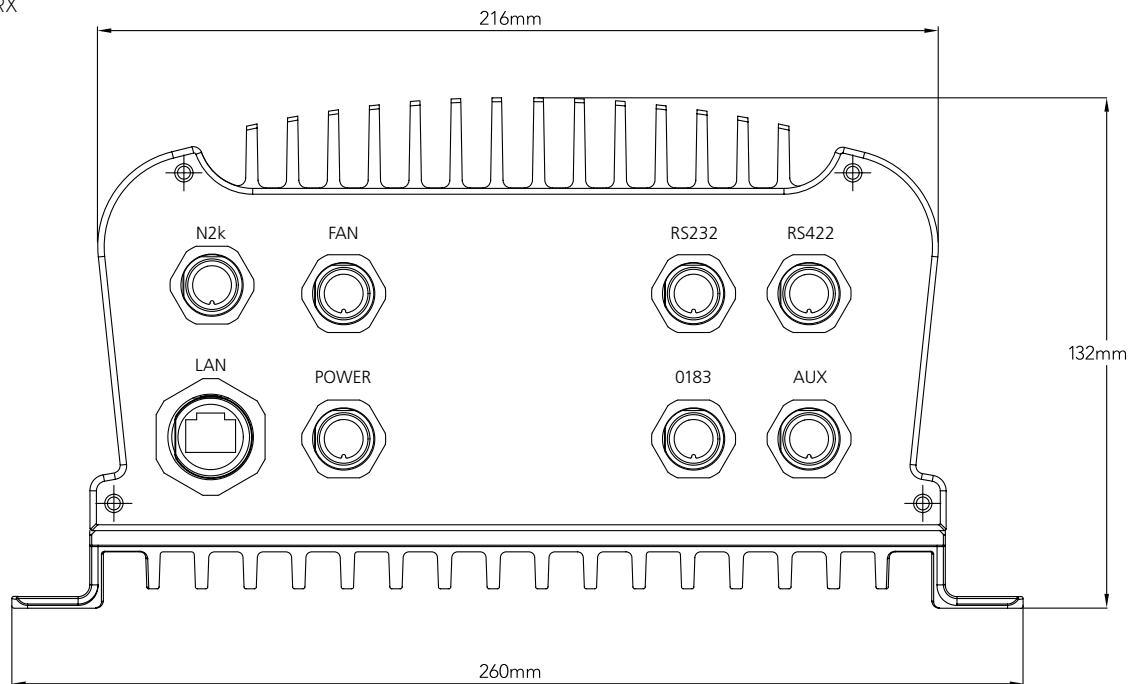
## MINIMUM PC SPECS FOR CDX SOFTWARE

	MINIMUM	RECOMMENDED
<b>OS</b>	Windows 7,8,1,10	Windows 8,1,10
<b>CPU</b>	2Ghz, 2 Cores/4 Threads	2Ghz, 4 Cores/4 Threads
<b>MEMORY</b>	4GB	8GB
<b>GRAPHICS</b>	DirectX11	DirectX11
<b>SCREEN RESOLUTION</b>	1024 x 768	FHD-1920 x 1080
<b>SSD</b>	250GB	2TB
<b>NETWORK</b>	Ethernet-GbE, WiFi-802.11ac	Ethernet-GbE, WiFi-802.11ac
<b>DUAL SCREEN SUPPORT</b>	Yes	Yes

## EQUIPMENT DIMENSIONS

	DIMENSIONS (LxWxH, MM)	WEIGHT
<b>DRX</b>	377 x 260 x 132	8.3kg
<b>TRANSDUCER 80 (FOR S3L)</b>	527 x 336 x 130	39kg (with 20m cable)
<b>TRANSDUCER 160 (FOR S3)</b>	326 x 163 x 94	15kg (cable dependent)

Image shows DRX Hardware. For more information and dimensional drawings please refer to the DRX installation manual.



WASSP requires (3rd party) position, heading, roll, pitch and heave data for electronic beam compensation/stabilization (not included in base package). See your local WASSP expert for more information/clarification. Specifications subject to possible change without notice.

\*Depth capability subject to a variety of external factors.

\*\*Open Client Support module is required for interfacing DRX to any 3rd party client application.

\*\*\*Requires WASSP Open Client Support Module

For more info or to find a dealer near you: W: [WASSP.COM](http://WASSP.COM) P: (+64) 9 373 5595 E: [sales@wassp.com](mailto:sales@wassp.com) FB: [facebook.com/wasspmultibeam](https://facebook.com/wasspmultibeam)

**wassp**<sup>®</sup>  
MULTIBEAM

SEE IT ALL

# WASSP: ALWAYS GOING BEYOND

WASSP is part of the ENL Group, world leaders in marine sounder, radar and communications for more than 72 years. Based in the marine nation of New Zealand, which is in one of the world's largest marine economic zones, ENL continues to achieve and push boundaries in what is a challenging and dynamic industry.

We make software and hardware solutions for organisations working in surveying and mapping, defence, commercial fishing and workboats.

Our passion and commitment to real innovation is what sets us apart. We consistently bring to market game-changing technology and cost effective products with simple operation.

---

## Worldwide support

WASSP is sold and supported by a global network of authorised distributors.

We offer comprehensive technical and user training and can direct technical support worldwide if required.

We pride ourselves on world class product support.

---

## For more info or to find a dealer near you:

Visit [WASSP.COM](http://WASSP.COM)

☎ (+64) 9 373 5595

✉ [sales@wassp.com](mailto:sales@wassp.com)

📘 [facebook.com/wasspmultibeam](https://facebook.com/wasspmultibeam)



46 Hillside Road, Wairau Valley, Auckland, New Zealand

☎ (+64) 9 373 5595

✉ [enquiries@enl.co.nz](mailto:enquiries@enl.co.nz)